

560
Lexington
Avenue



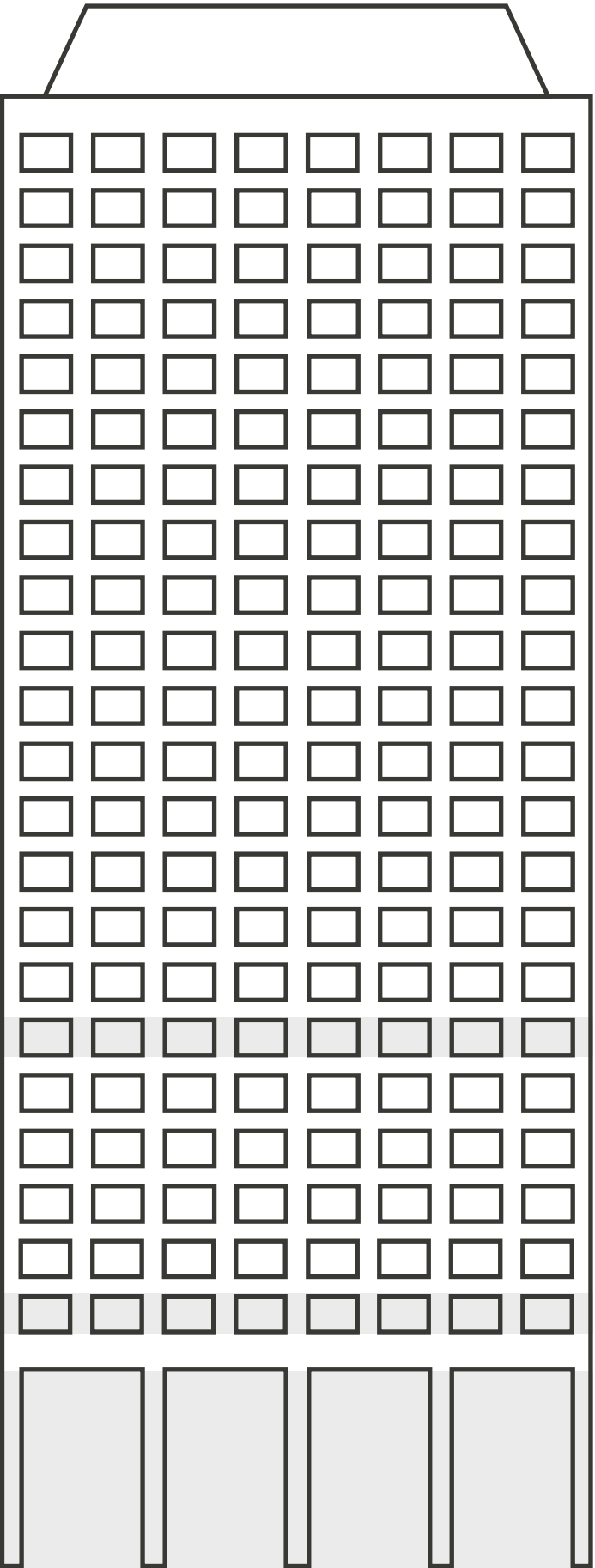
High-Impact
Availabilities



Rudín

560
Lexington
Avenue

High-Impact
Availabilities



560 Lexington Avenue

Description

560 Lexington Avenue was designed by The Eggers Group and opened in 1981. Skidmore, Owings & Merrill redesigned the lobby, plaza, elevators, and subway entrance, all crafted from limestone, white granite, and stainless steel. This Plaza District tower, with floor plates ranging from 18,000 to 21,000 Sq. Ft., is flanked by two National Historic Landmarks: the General Electric Building and St. Bartholomew’s Church.

Office Availabilities

Retail Floor: 1,265 Sq. Ft.

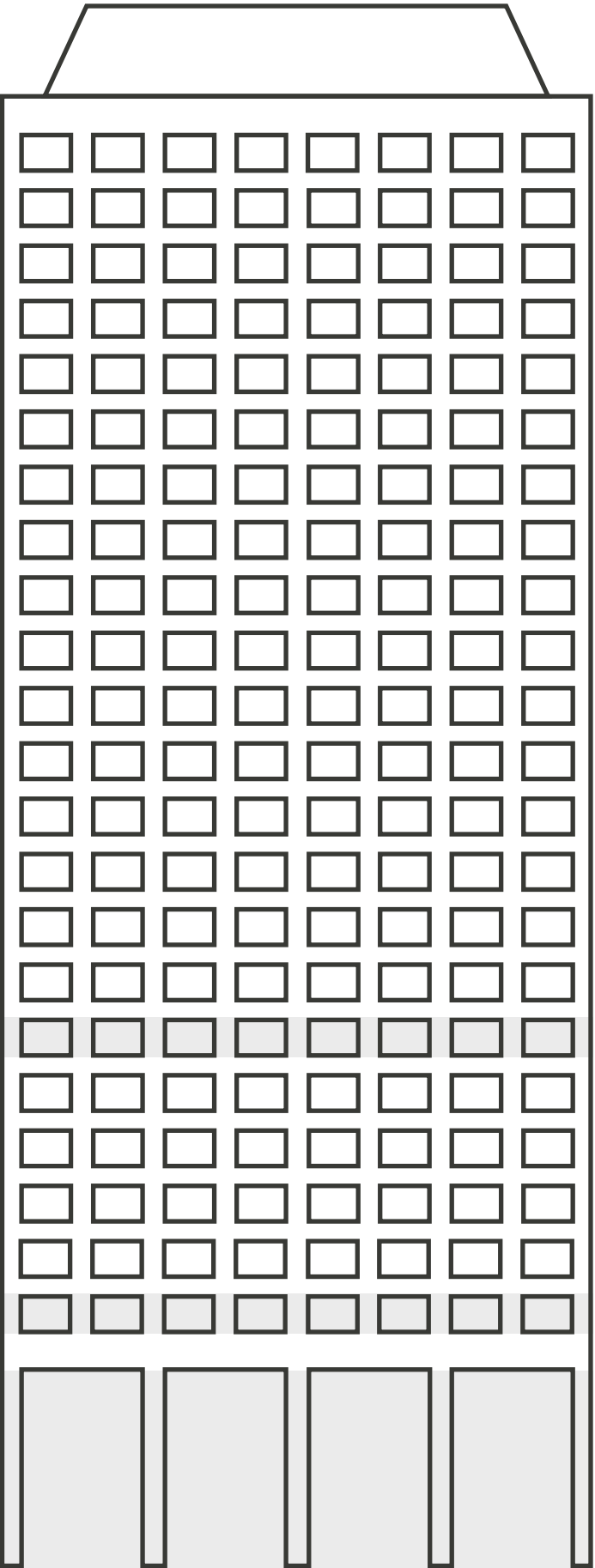
Rent: \$200 / Sq. Ft.

Entire 2nd Floor: 20,482 Sq. Ft.

Rent: \$68 / Sq. Ft.

Entire 7th Floor: 17,204 Sq. Ft.

Rent: \$73 / Sq. Ft.

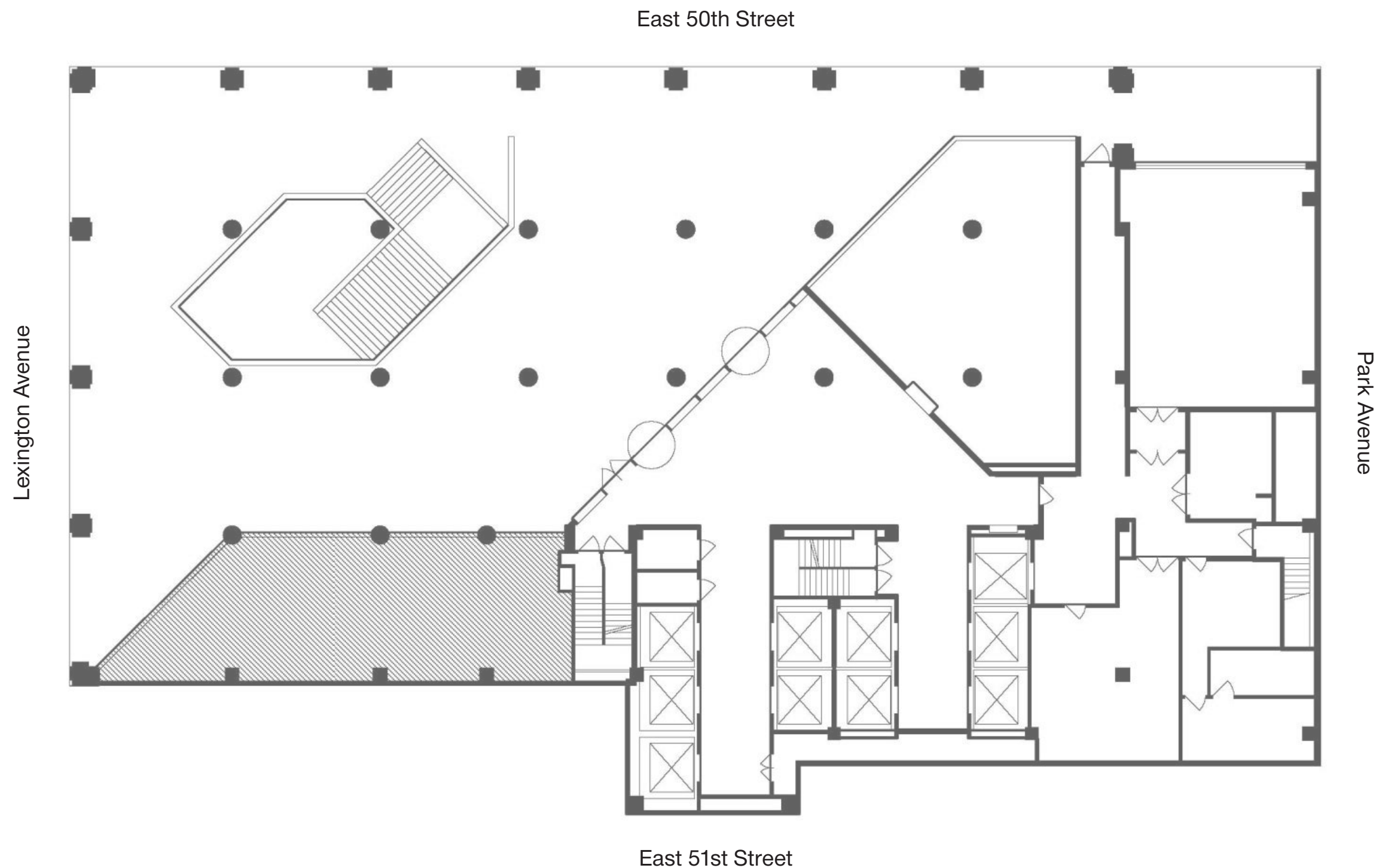


560
Lexington
Avenue

rudin.com

Retail Floor
1,265 Sq. Ft.

Core & Shell
Available Inmediately



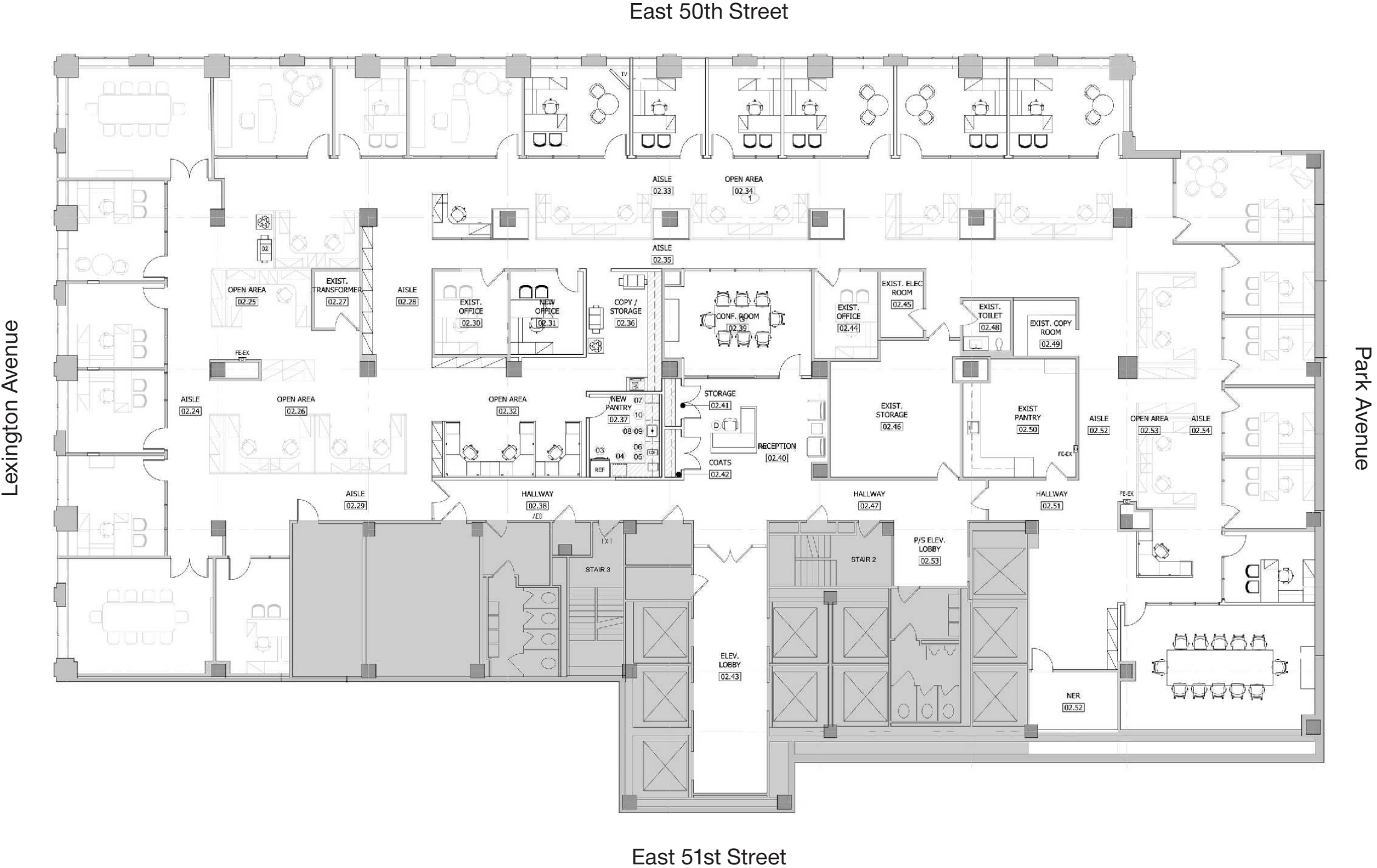
Thomas M. Keating

212.407.2481
tkeating@rudin.com

rudin.com

Floor 2
20,482 Sq. Ft.

Entire Floor Available



Robert Steinman

212.407.2490
rsteinman@rudin.com

rudin.com

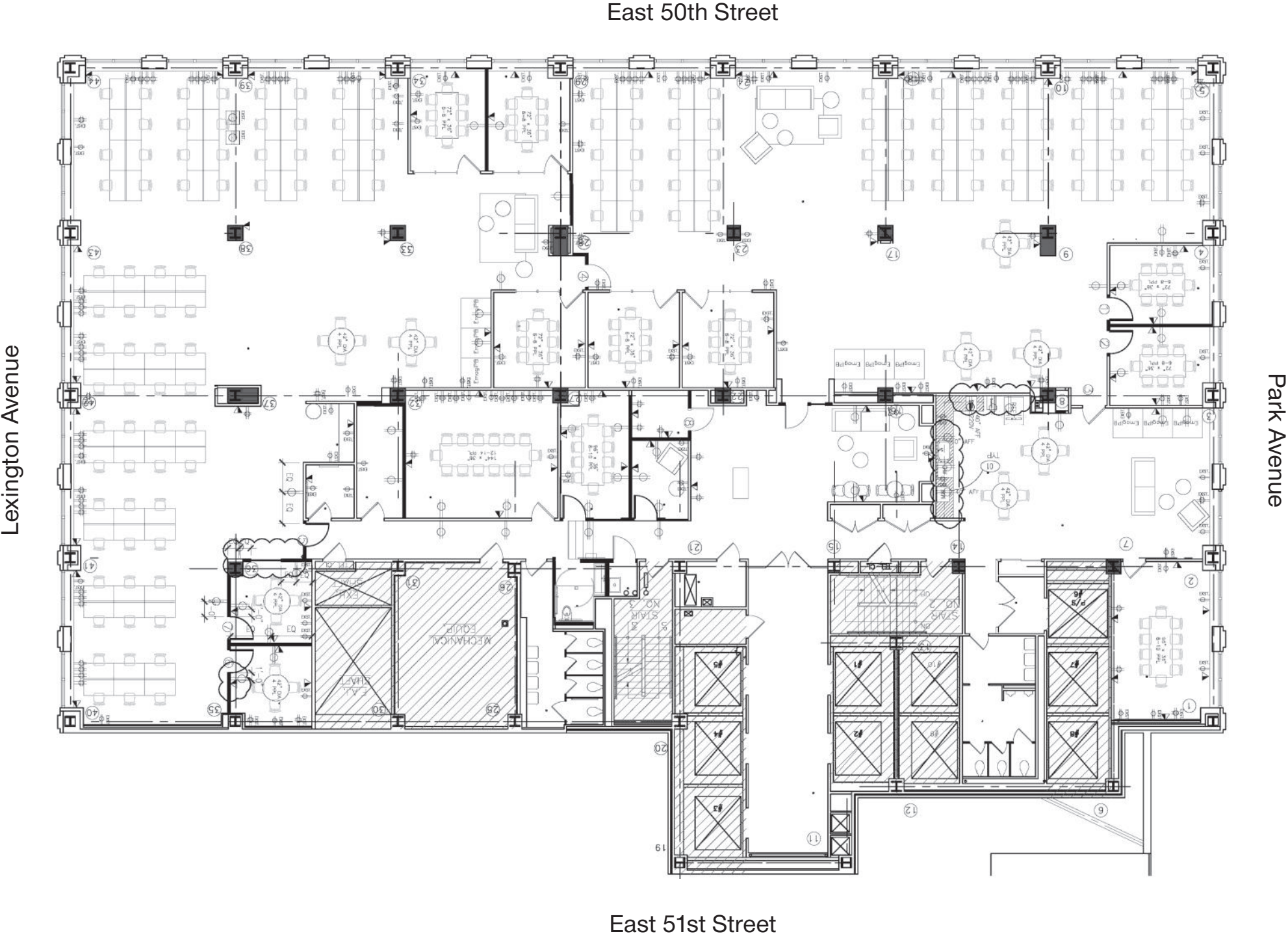


560
Lexington
Avenue

rudin.com

Floor 7
17,204 Sq. Ft.

Entire Floor Available



Robert Steinman
212.407.2490
rsteinman@rudin.com
rudin.com

560
Lexington
Avenue

rudin.com



560
Lexington
Avenue

rudin.com



560
Lexington
Avenue

udin.com



560
Lexington
Avenue

rudin.com



560
Lexington
Avenue

rudin.com





560
Lexington
Avenue

Retail Space for Rent

1,263 SF of Prime Retail
Frontage on Lexington Avenue
246 SF Basement Included

Contact

Thomas M. Keating Kevin Daly
212.407.2481 212.407.2437
tkeating@rudin.com kdaly@rudin.com

 Scan for more details
rudin.com

560
Lexington
Avenue

Rudin

Retail Space for Rent

1,263 SF of Prime Retail
Frontage on Lexington Avenue
246 SF Basement Included

Contact

Thomas M. Keating Kevin Daly
212.407.2481 212.407.2437
tkeating@rudin.com kdaly@rudin.com

 Scan for more details
rudin.com

560
Lexington
Avenue

Rudin

560
Lexington
Avenue

Retail Space for Rent

1,263 SF of Prime Retail
Frontage on Lexington Avenue
246 SF Basement included

Contact

Thomas V. Keating (in NJ)
212.407.2400 212.407.2400
tkeating@tdc.com tkeating@tdc.com

See this space details
tdc.com

560
Lexington
Avenue

Rudin

Retail Space for Rent

2,800 SF of
Prime Retail
Frontage on Lexington Avenue

Contact
Thomas V. Keating (in NJ)
212.407.2400 212.407.2400
tkeating@tdc.com tkeating@tdc.com

See this space details
tdc.com

560
Lexington
Avenue

Rudin

560
Lexington
Avenue

Transportation



Within 1 Minute Walk

Rockefeller Center

Within 4 Minute Walk



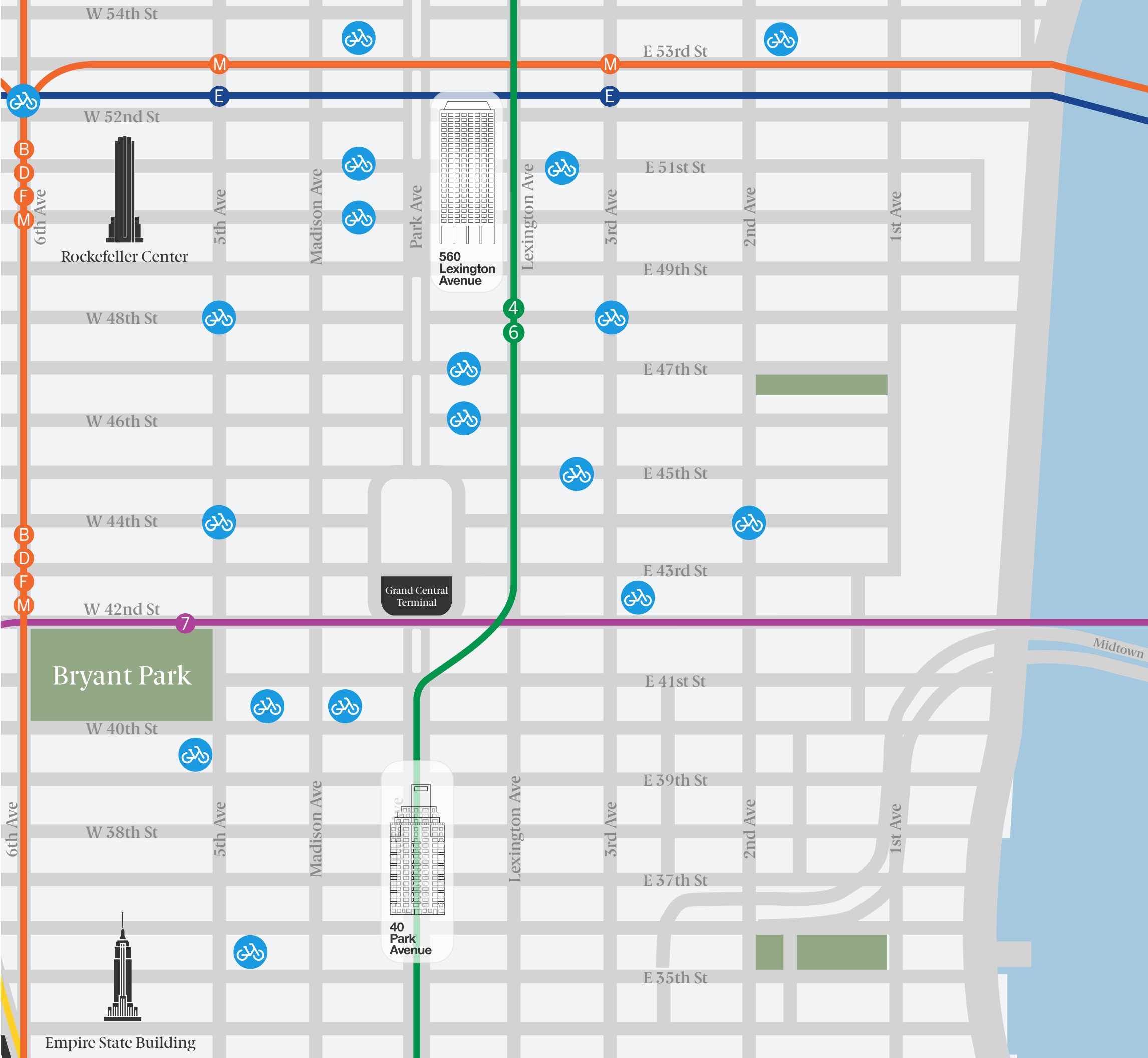
Within 5 Minute Walk

Grand Central Terminal

Within 10 Minute Walk

Bryant Park

Within 12 Minute Walk



560
Lexington
Avenue

Storefront Exposure

JPMorgan Chase

East 47th Street and Madison Avenue

BlackRock

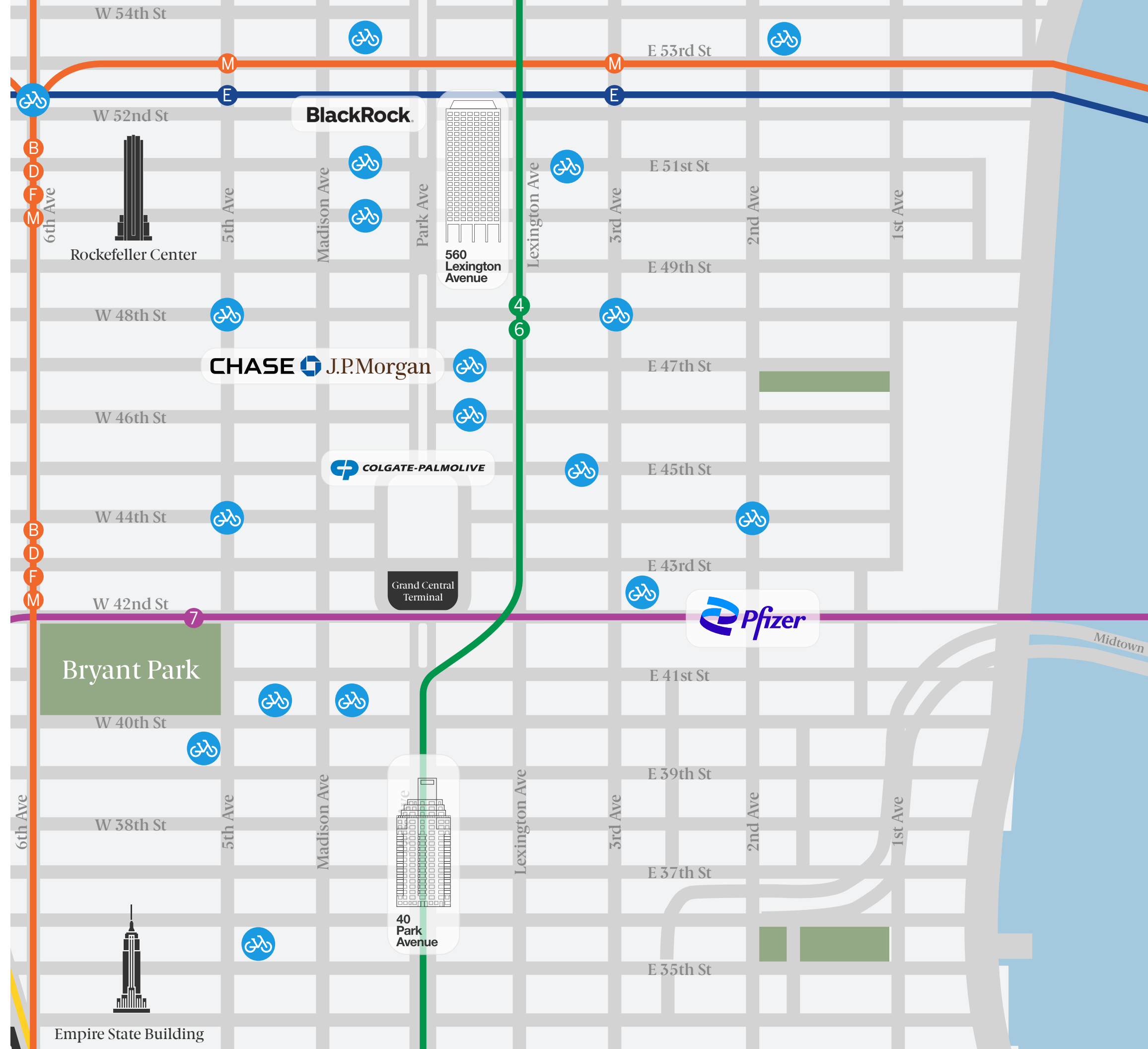
East 52nd Street and Park Avenue

Colgate-Palmolive

East 49th Street and Park Avenue

Pfizer

East 42nd Street and 2nd Avenue



Building Details

Owner	Rudin Management Company
Neighborhood	Midtown
Total RSq. ft	380,000 Sq. Ft.
Floors	22
Amenities	Covered Pedestrian Plaza Direct Entrance to Lexington Avenue Subway Street-level Retail Messenger Center
Technology	WiredScore Certified Gold Nantum Operating System Card Key Turnstile Access 24/7 Access Destination Dispatch Elevators in Progress Distributed Antenna System (DAS) in Progress
Mass Transit	Subway: 6, B, D, E, F, M Northern Entrance to Grand Central Terminal



560 Lexington Avenue

Rudin
Management
Company

For Leasing Information Please Contact:

Thomas M. Keating
212.407.2481
tkeating@rudin.com

Kevin Daly
212.407.2437
kdaly@rudin.com

rudin.com

REBNY

