

# 845 Third Avenue

Prime Retail  
Corner  
Available

Robert Steinman

Thomas M. Keating

212.407.2490

rsteinman@rudin.com

212.407.2481

tkeating@rudin.com

[rudin.com](http://rudin.com)



Rudin

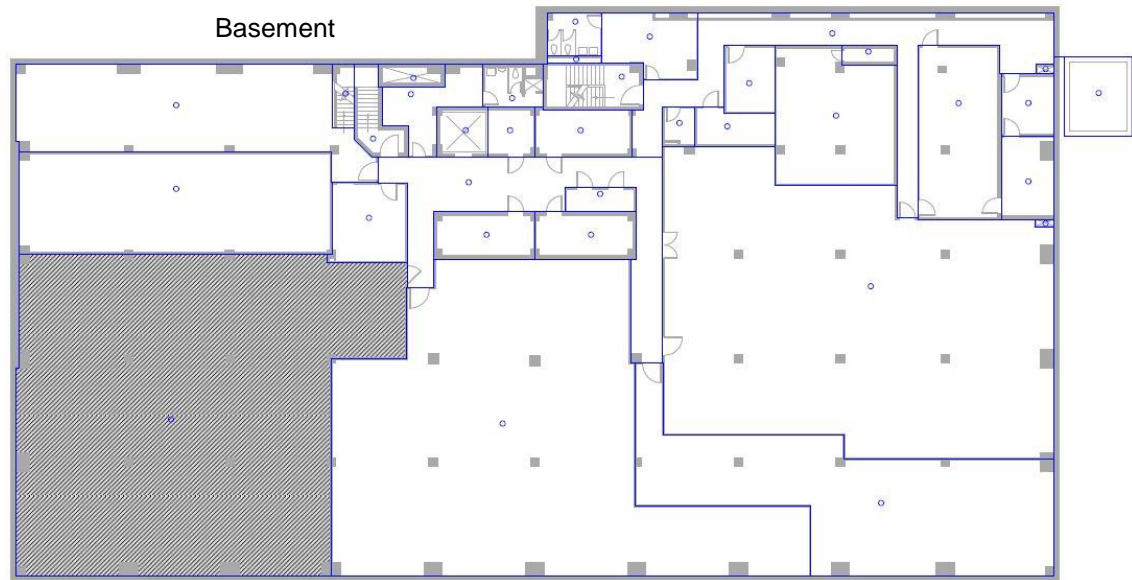
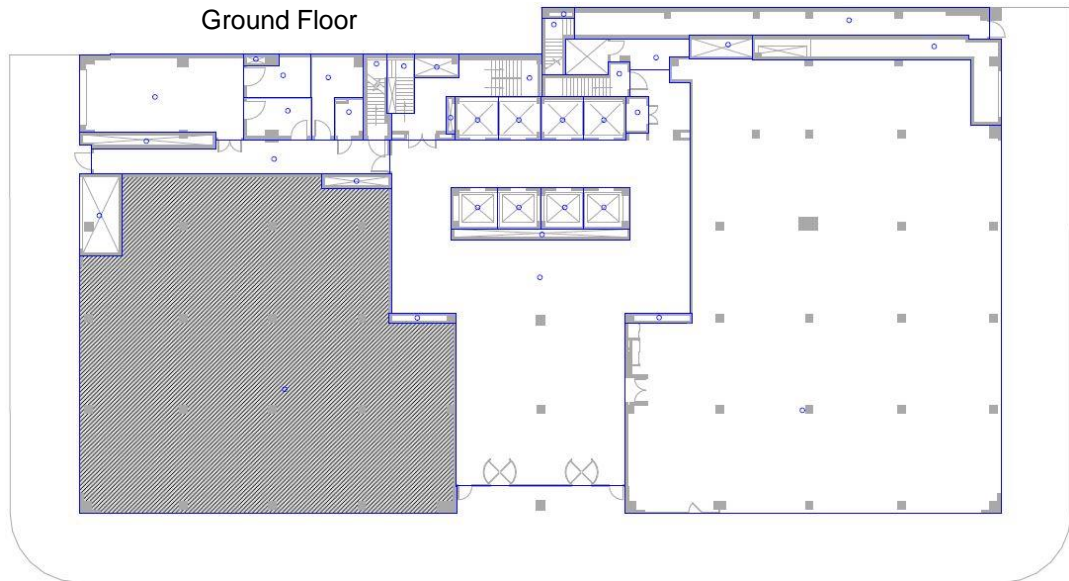
# 845 Third Avenue

Rudin

Prime Third Avenue Retail Corner

Ground – 5,381 Sq. Ft.  
Basement – 3,961 Sq. Ft. of  
contiguous space available.

Core & Shell Plan



Robert Steinman      Thomas M. Keating

212.407.2490      212.407.2481  
rsteinman@rudin.com      tkeating@rudin.com

[rudin.com](http://rudin.com)



REBNY