

# Rudin Management Company, Inc. 641 Lexington Avenue

## Retail Space Available

Ground Floor: 8,104 SF + Basement: 2,200 SF

Ask: \$175 per SF | Possession: Immediate | Ceiling Height: 20' | Frontage: 115'

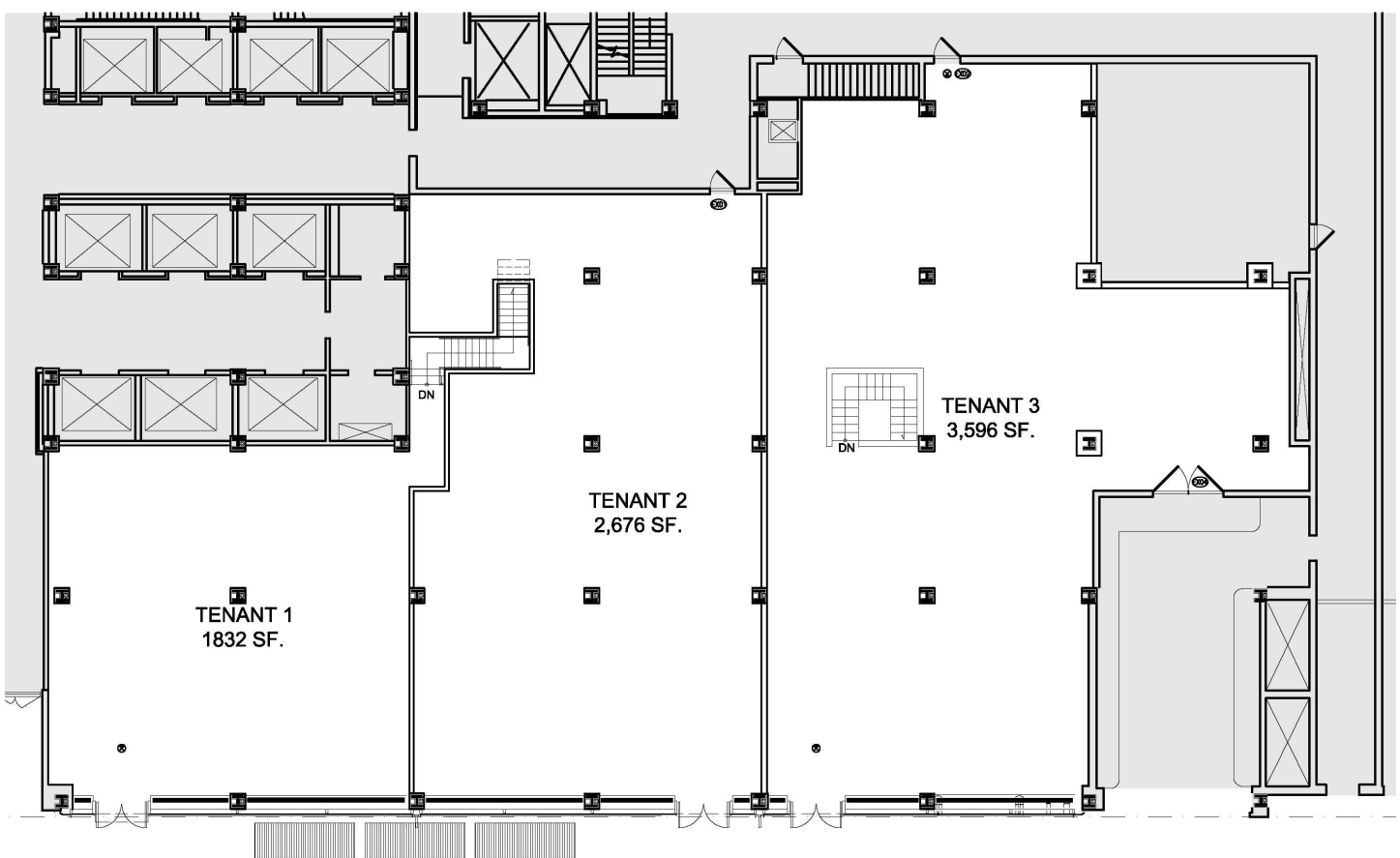


This prime retail space is located on East 54th Street, right around the corner from Lexington Avenue and will feature brand new glass storefronts with louvers for venting.

### Proposed Divisions Considered

Space # 1: 1,832 SF | Space #2: 2,676 SF | Space #3: 3,596 SF

LEASE OUT



### Divided Frontage

Space # 1: 40'-10" | Space #2: 40'-5" | Space #3: 37'-5"

LEASE OUT

For more information, please contact:

**Robert Steinman**

**212 407 2490**

**rsteinman@rudin.com**



Rudin Management Company, Inc.

[www.rudin.com](http://www.rudin.com)