

**TIMES SQUARE AT THE NORTHWEST CORNER OF  
SEVENTH AVENUE AND 42ND STREET**

# 3XSQ

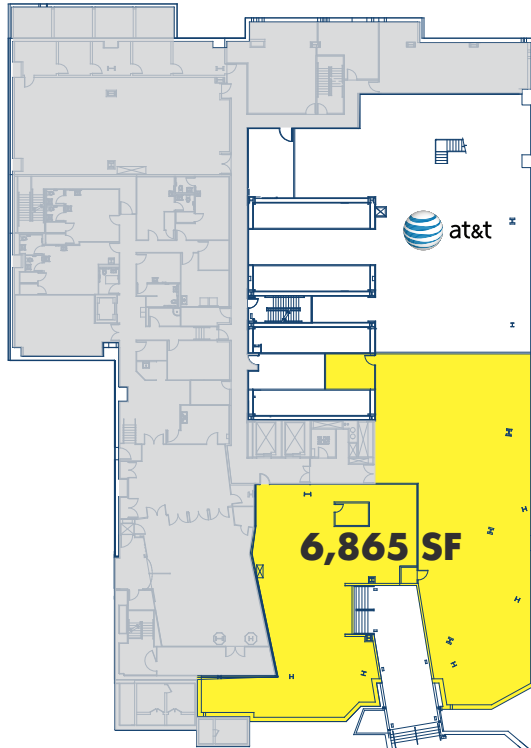


CONCEPTUAL RENDERING

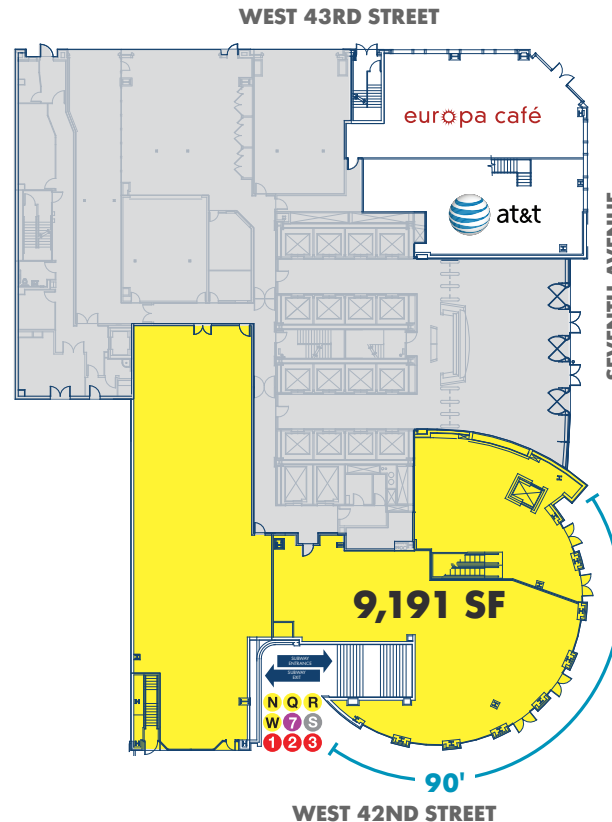
# CORNER MORE ATTENTION

Express yourself at 3 Times Square  
with **TRIPLE HEIGHT EXPOSURE**  
and expansive retail space

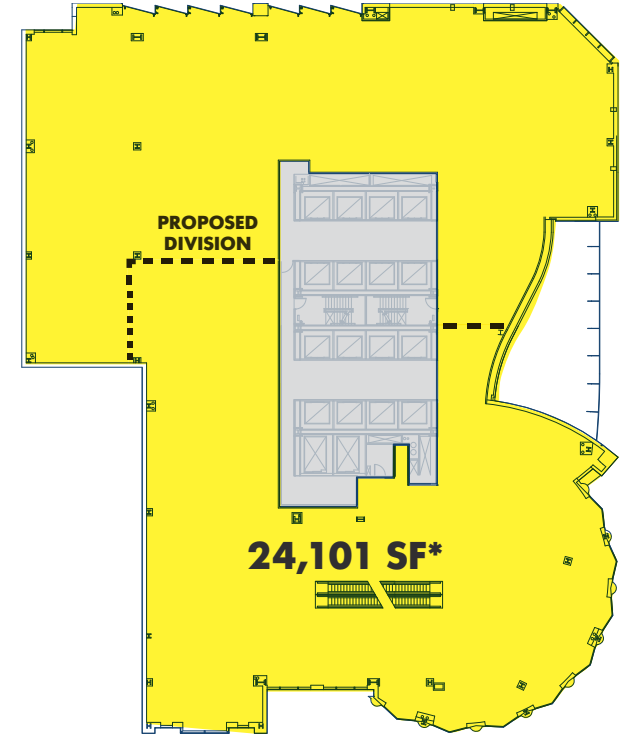
## LOWER LEVEL



## GROUND FLOOR



## SECOND FLOOR\*



\*DIVISIBLE

### SPACE

Ground Floor	9,191 SF
Second Floor	24,101 SF*
Lower Level	6,865 SF

**TOTAL** 40,157 SF

\*Divisible

### FRONTAGE

90 FT wraparound on  
West 42nd Street and Seventh Avenue

### POSSESSION

Arranged

### CEILING HEIGHT

Ground Floor	25 FT
Second Floor	18 FT
Lower Level	15 FT

### TERM

Long term

### SITE STATUS

Currently Steve Madden, Chase and  
Thomson Reuters, Formerly Skechers

### COMMENTS

Additional space can be made  
available to create over 60,000 SF



# 360K

PEDESTRIANS ENTER  
TIMES SQUARE DAILY

# 50M

ANNUAL VISITORS  
TO TIMES SQUARE

# \$1.7B

IN ANNUAL RETAIL SALES  
AND GROWING

# 170K

OFFICE WORKERS,  
MANY OF WHOM WORK FOR  
FORTUNE 500 COMPANIES

# CAPTURE THE CROWDS



# 15 LINES + 64M

RIDERS ANNUALLY AT  
THE CITY'S BUSIEST SUBWAY STATION





# BE HERE WHEN THE BALL DROPS

## CONTACT EXCLUSIVE AGENTS

<b>Brandon Eisenman</b>	212.331.0123	beisenman@rkf.com
<b>Robert K Futterman</b>	212.286.9782	rfutterman@rkf.com
<b>Carly Geller</b>	212.309.2829	cgeller@rkf.com
<b>Ariel Schuster</b>	212.331.0132	aschuster@rkf.com



**521 FIFTH AVENUE, FLOOR 7**  
**NEW YORK, NY 10175**  
**212.599.3700 | INFO@RKf.COM | RKf.COM**

© 2017 ROBERT K. FUTTERMAN & ASSOCIATES, LLC. All information is from sources believed reliable, not independently verified, and thus subject to errors, omissions, and modifications such as price, listing, square footage, rates and commissions. All information, estimates and projections subject to change, market assumptions, unknown facts and conditions, and future potentialities. RKF makes no express or implied representations or warranties, as facts and results may vary materially from all information, estimates and projections. All renderings presented are conceptual.

