

# 32 Avenue of the Americas

Entire 25<sup>th</sup> Floor

---

Partial 24<sup>th</sup> Floor

33,953 Sq. Ft.  
Available January 1, 2024

Combined Floors with  
Connecting Stair

Robert Steinman

212.407.2490  
rsteinman@rudin.com

[rudin.com](http://rudin.com)

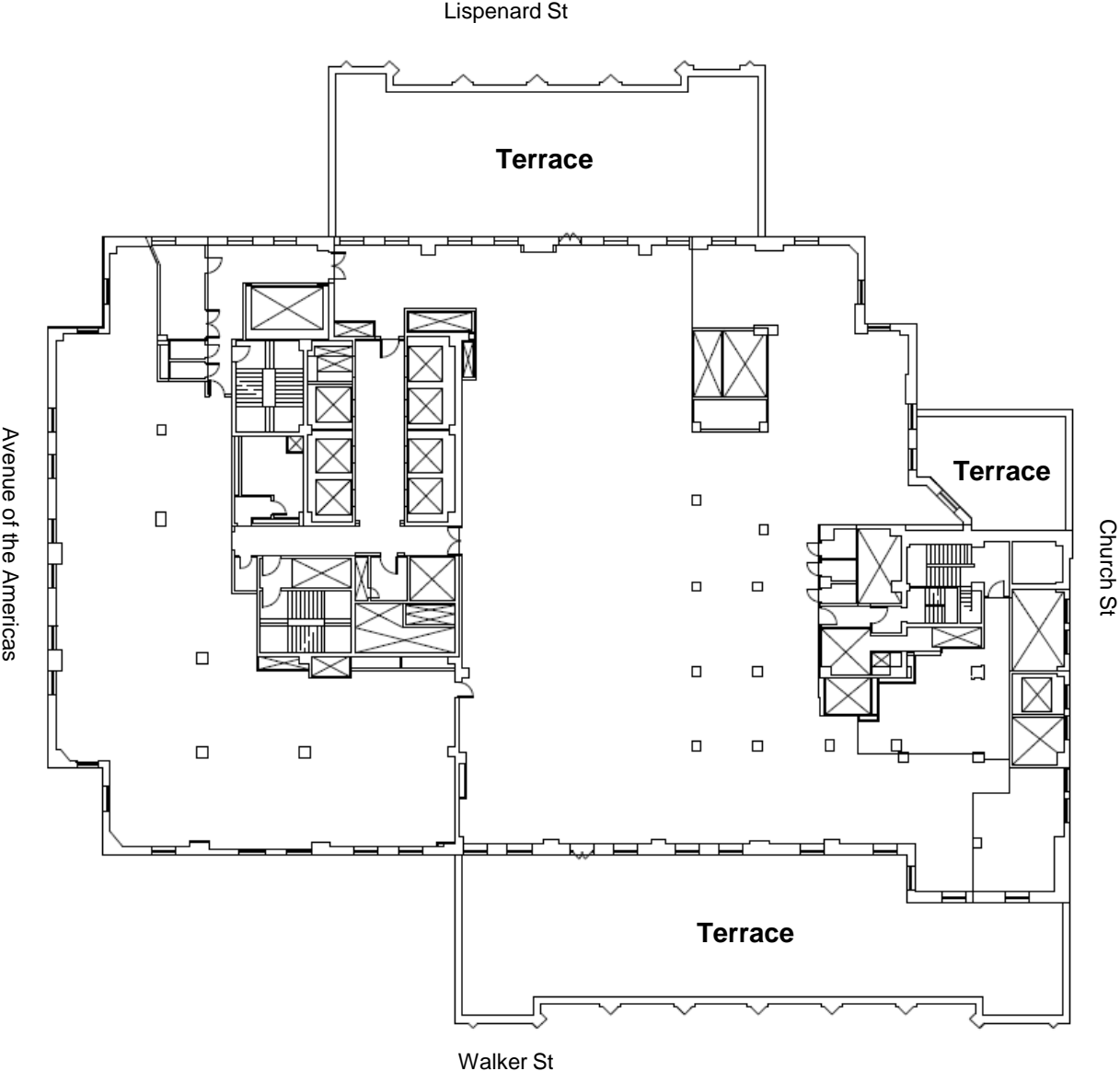


Rudin

# 32 Avenue of the Americas

25<sup>th</sup> Floor  
Core and Shell Plan

27,258 Sq. Ft.  
Entire Floor



Robert Steinman

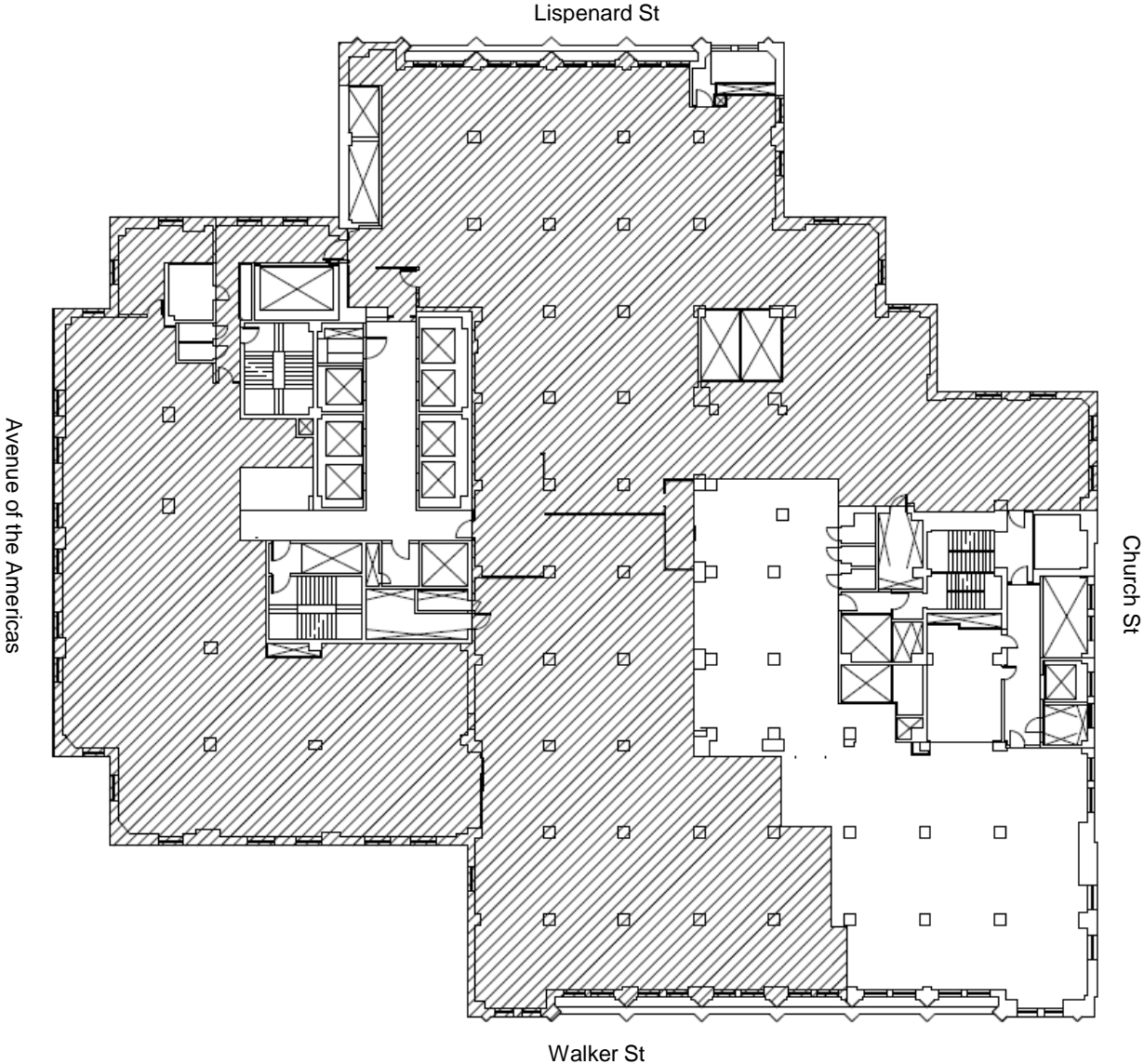
212.407.2490  
rsteinman@rudin.com



# 32 Avenue of the Americas

24<sup>th</sup> Floor  
Core and Shell Plan

6,695 Sq. Ft.  
Partial Floor



Robert Steinman

212.407.2490  
rsteinman@rudin.com

