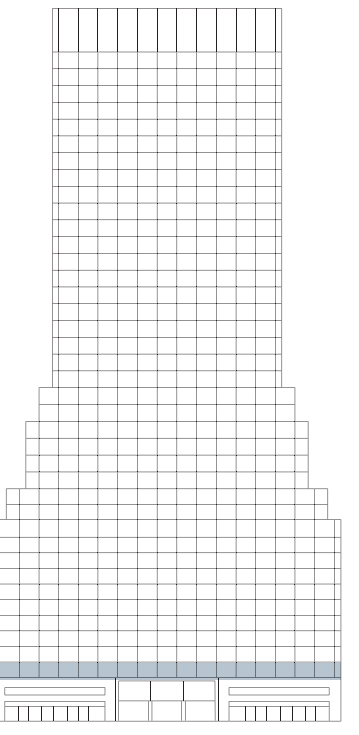
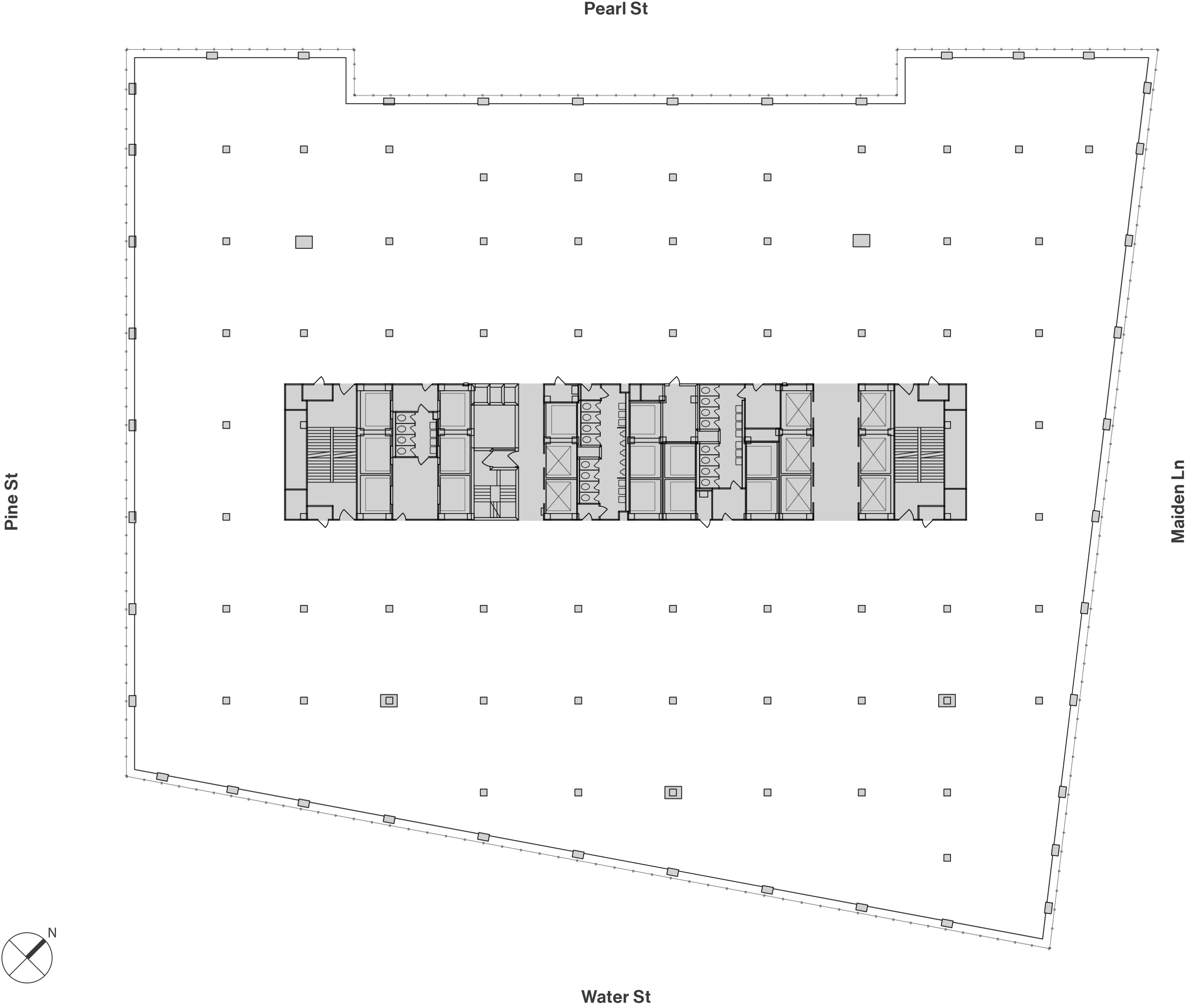




# Typical Base Floor Core & Shell

61,369 SQ. FT.  
2nd Floor



80 Pine



Rudin



# Typical Base Floor Office Intensive Layout

61,369 SQ. FT.  
2nd Floor

WORKSPACE	SEATS
Executive Office	1
Private Office	54
Benching (6'0" x 2'6")	208
Reception	1
<b>Total Headcount</b>	<b>264</b>

COLLABORATIVE SPACE	
Boardroom	1
Conference Room	16
Informal Meeting	3
Training Room	1
Phone Room	2

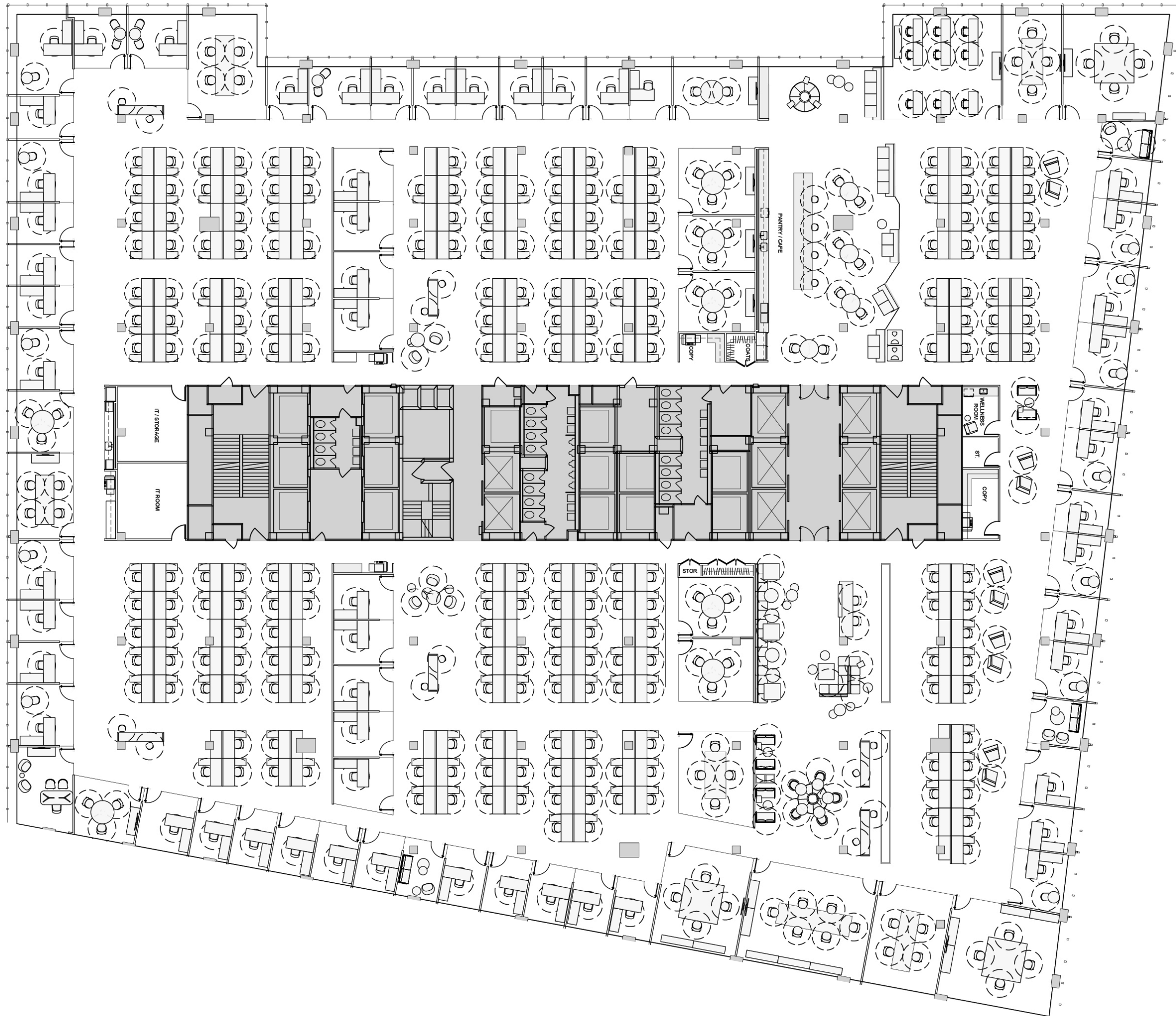
SUPPORT	
Café	1
Pantry	1
Coat Closet	2
Copy	3
IT Room	1
Storage Room	3
Wellness Room	1

80 Pine



REBNY

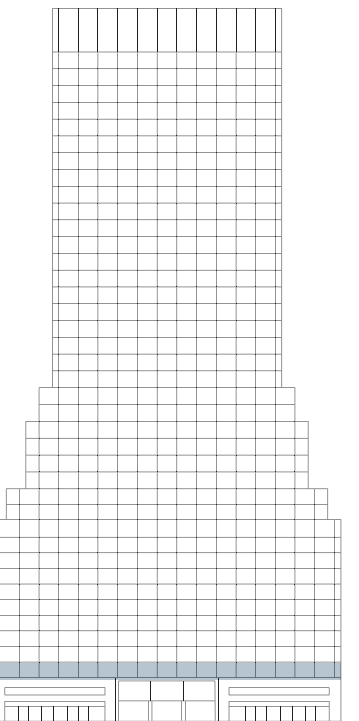
Pearl St



Pine St

Maiden Ln

Water St



Rudín