

# 295 Central Park West

Rudin

Professional Suite Unit 3

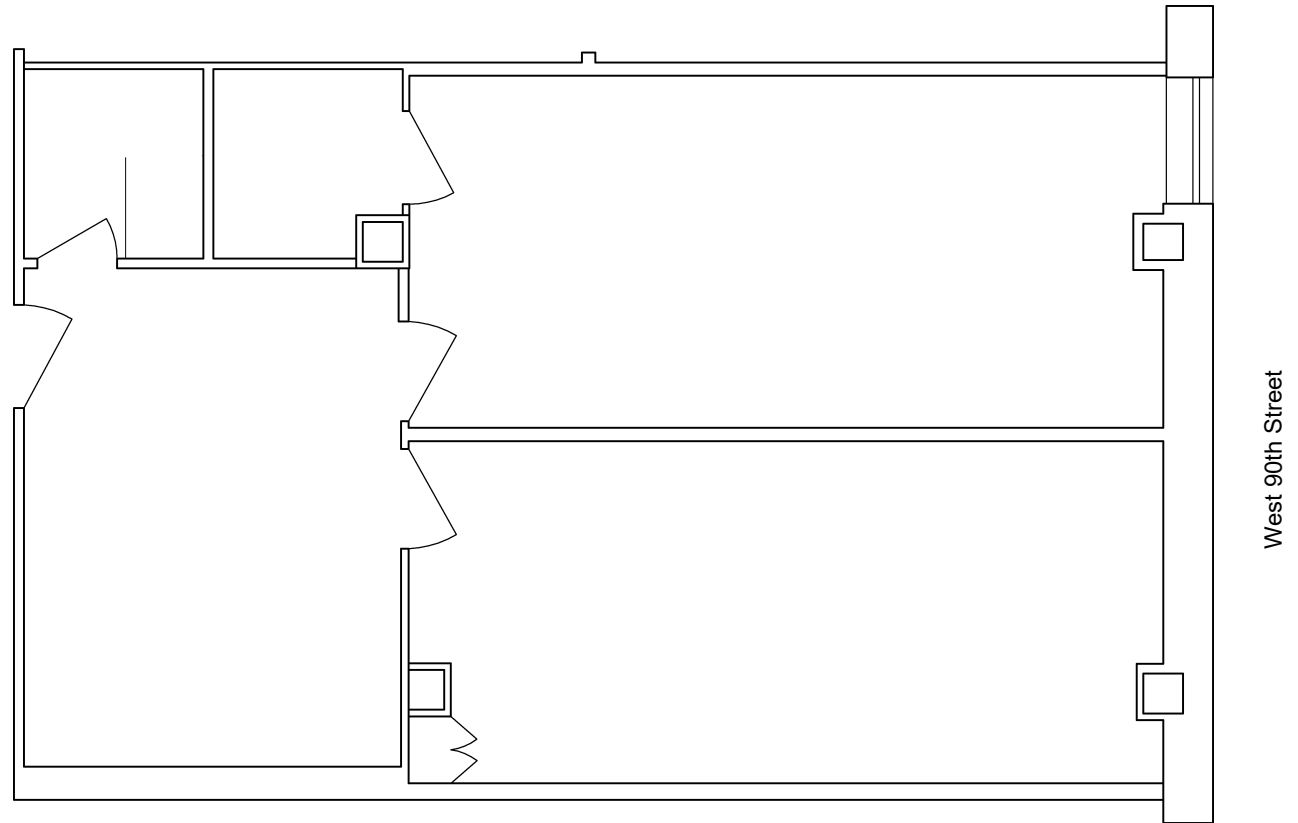
600 Sq. Ft.

Partial Ground Floor  
Possession Arranged

Ask: \$85 per Sq. Ft.

---

Office entrance on  
West 90<sup>th</sup> Street



Thomas M. Keating

212.407.2481  
tkeating@rudin.com

rudin.com